

DC EXHIBIT D

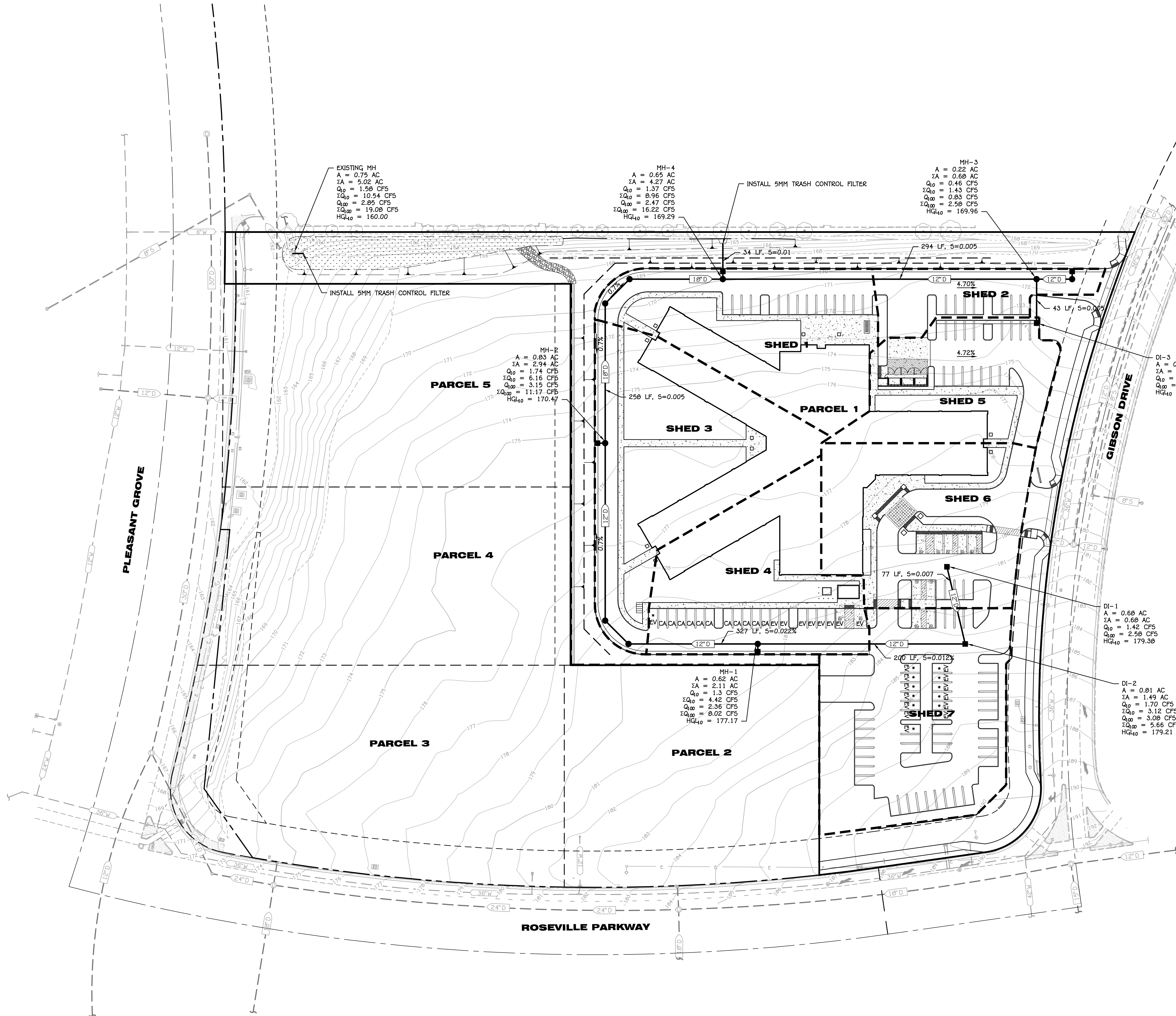
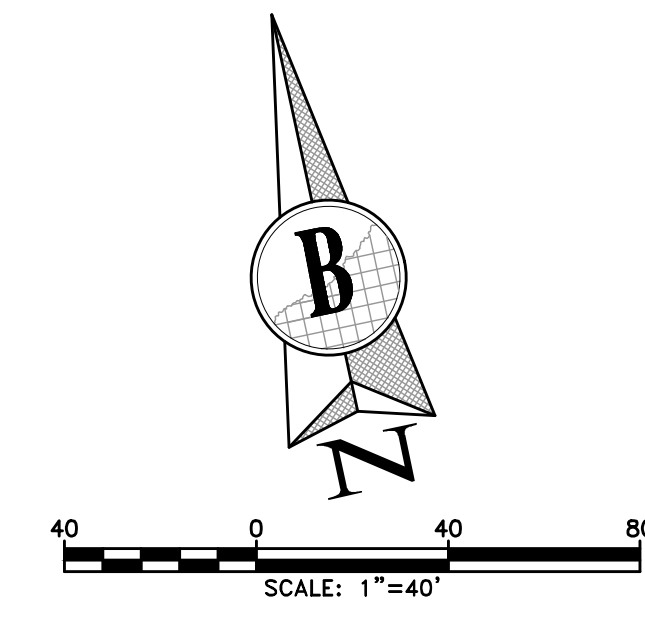
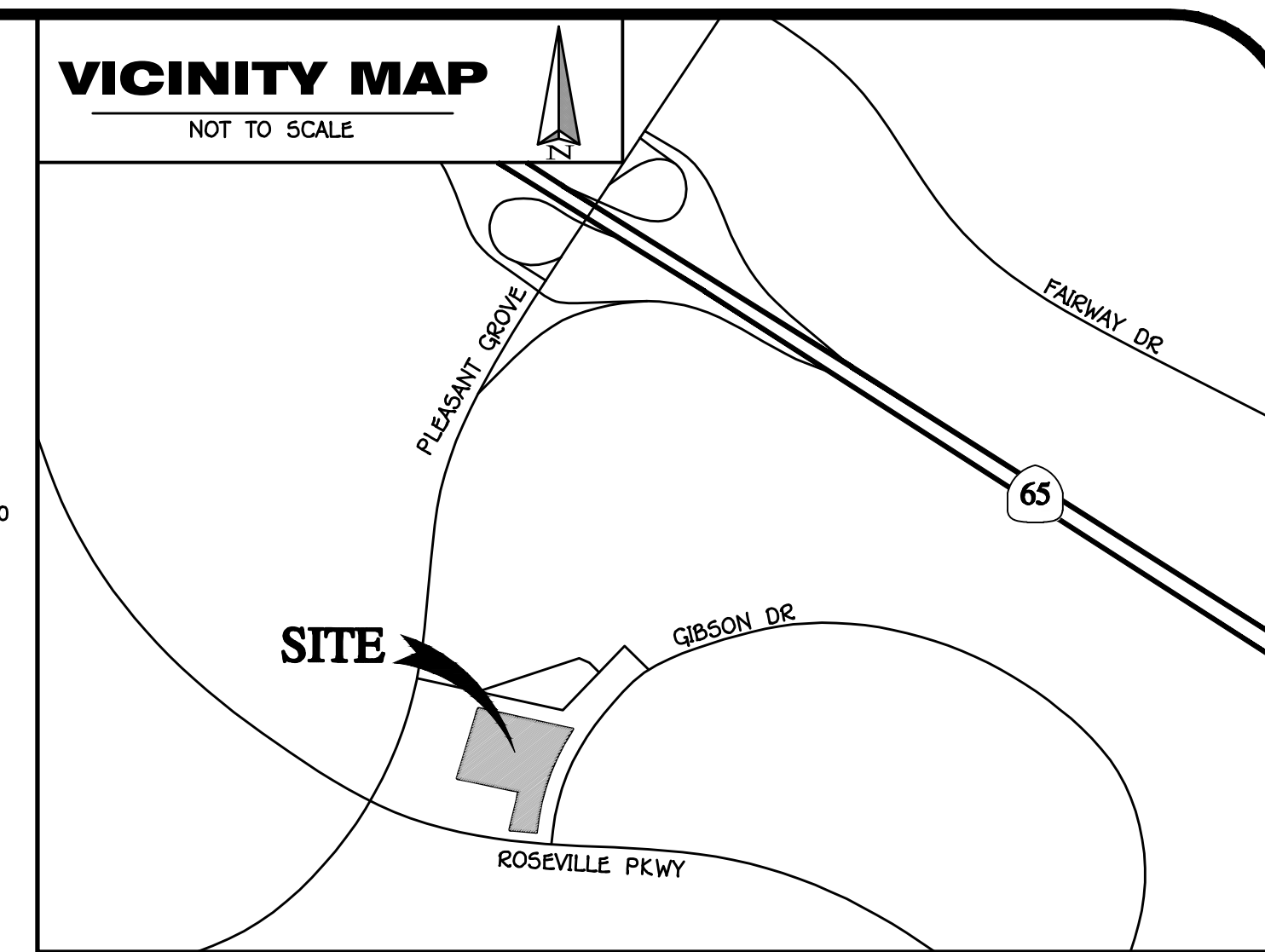
SHED MAP FOR: CONTINUUM CARE - ROSEVILLE 960 GIBSON DRIVE

CITY OF ROSEVILLE

CALIFORNIA

VICINITY MAP

NOT TO SCALE



LEGEND

DESCRIPTIONS

(P) PROPOSED (E) EXISTING

STORM DRAIN		
SANITARY SEWER		
WATER MAIN		
FIRE SERVICE		
CENTERLINE		
RIGHT OF WAY LINE		
BOUNDARY LINE		
ELECTRICAL LINE		
GAS LINE		
TELEPHONE LINE		
JOINT TRENCH		
FENCE		
RETAINING WALL		
SIDEWALK WITH CURB AND GUTTER		
MANHOLE		
DRAIN INLET		
METERED WATER SERVICE		
FIRE HYDRANT		
BLOWOFF VALVE		
GATE VALVE		
BUTTERFLY VALVE		
TYPE 'A' STREET LIGHT		
TYPE 'B' STREET LIGHT		
TRAFFIC SIGNAL		
TRANSFORMER		
PULLBOX		
UTILITY SERVICE PEDESTAL		
UTILITY POLE		
GUY WIRE		
4 SIDED STREET SIGN		
SIGN		
DIRECTION OF FLOW		
FLOWLINE		
SWALE		
PAD ELEVATION		
ELEVATION		
2:1 SLOPE UNLESS NOTED OTHERWISE		
TREE TO BE REMOVED		
TREE TO REMAIN, CONSTRUCT TEMPORARY FENCE		

SHED MAP FOR:
CONTINUUM CARE - ROSEVILLE
960 GIBSON DRIVE
REVISED MAY 13, 2024



1001 Enterprise Way, Suite 100 Roseville, CA 95678 (916) 783-8898

ALL RIGHTS RESERVED. NO PART OF THIS DOCUMENT IS TO BE REPRODUCED OR TRANSMITTED IN ANY FORM OR BY ANY MEANS, ELECTRONIC OR MECHANICAL, INCLUDING PHOTOCOPYING, RECORDING, OR BY ANY INFORMATION STORAGE AND RETRIEVAL SYSTEM, WITHOUT THE WRITTEN PERMISSION OF BURRELL CONSULTING GROUP, INC.